

Office to let

Oregon Park A

Bucharest, Sector 2, Pipera Road

Building information

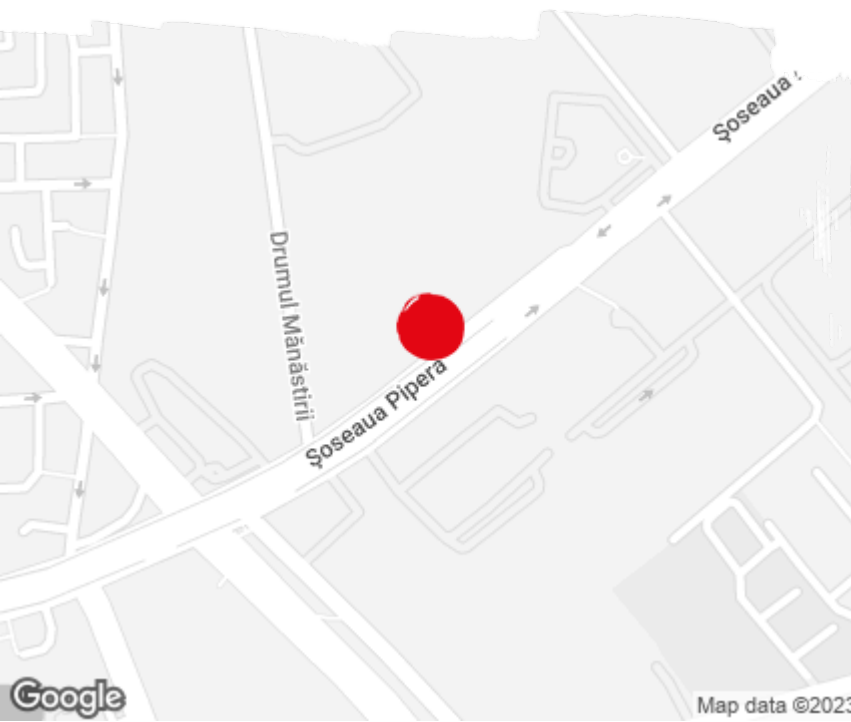
| | |
|----------------------|-------------|
| Building status | Existing |
| Year of construction | 2016 |
| Parking ratio | 1 / 60 sq m |
| Total building area | 20 104 sq m |

Commercial terms

| | |
|-----------------|---------------|
| Office space* | after login * |
| Parking | after login * |
| Service charge* | after login * |
| Availability | after login * |

* Asking terms for m²/month

Location



Available space

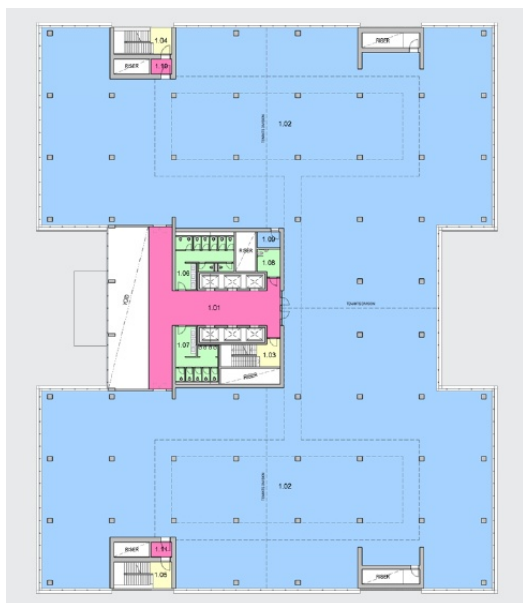
5 800 sq m

Available office space

2 800 sq m

Minimum office space

Typical floor plan



Available space

| Floor | Vacant space | Availability |
|-------|---------------------|---------------------|
| 5 | please contact us * | please contact us * |
| 6 | please contact us * | please contact us * |
| Total | after login * | |

Public transport

Metro: M2

Bus: 112, 135

Tram: 5

Contact



+40 21 302 3400

More information